

Mahindra
Rise.

INTRODUCING THE NEW REXTON RX6

THE HIGH-END MANUAL TRANSMISSION MODEL WITH A RANGE OF LUXURIOUS FEATURES



SSANGYONG

REXTON
by Mahindra

INDULGE YOURSELF

DESIRABLE. LIKE AN INDULGENCE SHOULD FEEL.

THE PLUSH, POWERFUL AND PREMIUM SSANGYONG REXTON. BY MAHINDRA.



You could admire it from a distance like the rest of the world. Or you could arrive in it. The Rexton is much more than an automobile. It's a masterpiece of technology and a tribute to your success. Every component, from the engine to entertainment system is state-of-the-art. Every square inch of the passenger cabin is plush and crafted. All to bring to you, a superlative driving experience.

KOREA TO INDIA, VIA THE WORLD.

Founded in 1954, the SsangYong Motor Company is a leading automobile manufacturer in South Korea. The company's unrelenting pursuit of better engineering and design have made its SUVs, sedans and crossovers a success in over 90 countries. Now, integrated into the Mahindra group, the first of SsangYong's range of premium vehicles to be launched in India, the Rexton is now available to discerning individuals such as yourself.





DRAWS ATTENTION LIKE YOU DRAW APPLAUSE.

SUV RUGGEDNESS MADE OVER IN A MODERN, ELEGANT STYLE.

You make a powerful statement, when you step out of the Rexton. Right from the classy chrome grille to the projection headlamps configured to resemble the eyes of an eagle. The hood character line adds fullness to the distinctive, aggressive look up front; while along the sides, the stainless steel beltline and chrome moulding combine to create a well-balanced flow from the front fender to the rear quarter.

- 1: Projector headlamps with L-shaped parking lights
- 2: Chrome grille
- 3: LED tail lamps
- 4: Stylish ORVMs with LED turn indicators
- 5: 10-spoke alloy wheels. Stainless steel beltline and chrome moulding



ARRIVE
LIKE YOU NEVER LEFT.

OCCUPY YOUR PLUSH CABIN.

Enter the Rexton and you'll feel like you just left your posh cabin to enter another. The luxury is all the same. Starting with the premium, dual tone, beige and black interiors, complemented by metalgrain accents and plush leather seats. But ambience is not just about taste, it's also about the right temperature. The Rexton comes with fully automatic climate control. With vents in the 2nd and 3rd row to ensure that every journey is a breeze.



- 1: Elegant center console
- 2: Convenient center armrest
- 3: AC vents and cup holders in rear



TECHNOLOGY THAT WORKS LIKE A CHARM.

EASE AND ENTERTAINMENT AT THE PRESS OF A BUTTON.

When you ride in the Rexton you have technology for company all along the way. The driver's seat not only adjusts itself electrically but also stores your preference in the memory. Just as it retains your setting of the outside rear view mirror. The navigation system comes preloaded with maps and the auto headlamps and rain-sensing wipers function without having to be told. But what immediately catches your eye is the infotainment touch screen that supports all widely used audio and video formats. So sit back and enjoy the show.



1



2

- 1: Electrically adjustable driver's seat
- 2: Three memory presets for driver's seat and ORVM
- 3: State-of-the-art Infotainment system
- 4: Rain sensing wipers
- 5: Auto headlamps



3



4



5



Dashboard area featuring air vents and a central display screen.

Row of control buttons including hazard lights, parking brake, and other vehicle functions.

Kenwood infotainment screen with surrounding control buttons.

Climate control panel with a rotary dial and buttons for fan speed and temperature.

Left circular control knob for climate or audio functions.

Right circular control knob for climate or audio functions.

Automatic gear shift lever with a handbrake.

Steering wheel with a silver logo in the center and multiple control buttons on the spokes.

Instrument cluster featuring a speedometer (0-180 km/h), tachometer (0-6000 rpm), and fuel/temperature gauges.

Black accelerator pedal.

Black brake pedal.

Black clutch pedal.

PURE PERFORMANCE. READY TO DO YOUR BIDDING.



AUTHENTIC SUV PERFORMANCE.

The Rexton gets its spirited personality from its refined engines. The model you choose will decide what sits under your Rexton's hood. The Manual comes with a Torque on Demand system while the Automatic comes with an All Wheel Drive system. Needless to say, both models are internationally proven and boast of remarkable 4x4 capability.

TRANSMISSION

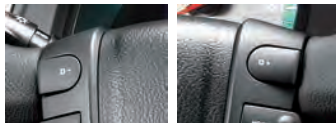


E-tronic Automatic Transmission (RX7 model)

The 5-speed E-tronic automatic transmission, built with Mercedes-Benz™ technology, provides smooth and quiet operation. The advanced transmission monitors the vehicle's operational status, while optimal gear changing delivers the best driving performance at high speed and improves fuel efficiency.

Thumbs up manual mode

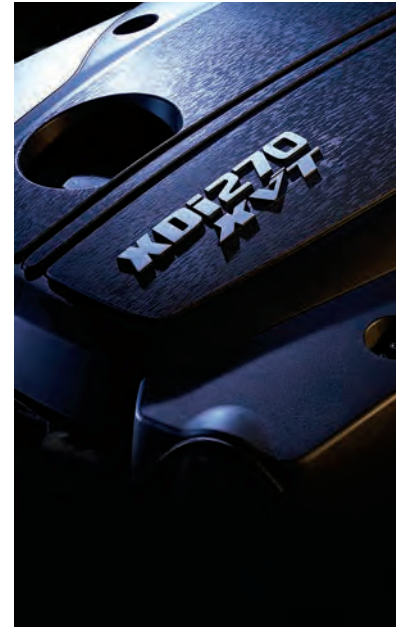
The Rexton with Automatic Transmission features a sporty driving option. Switches on the gearshift knob and steering wheel let the driver shift gears up or down manually.



Manual transmission (RX5 model)

The 5-speed manual offers smooth and responsive shifting action, while a dual-mass flywheel has been included to reduce noise and vibration.

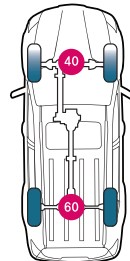
ENGINE



DRIVE

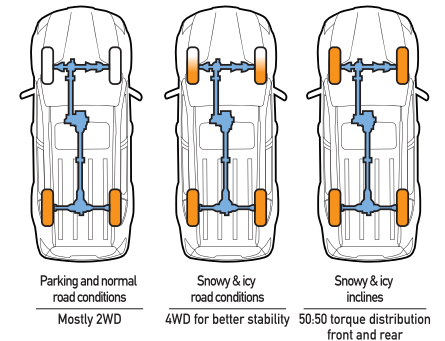
Full-time AWD (RX7 model)

The all-wheel drive system distributes 60% of the torque to the rear wheels and 40% to the front wheels at all times. This provides quick starts and great overall responsiveness, for improved driving safety under all road and weather conditions. Whenever any given tyre starts to slip, power is immediately transferred to those tyres with traction for maximum grip when starting out or during cornering.

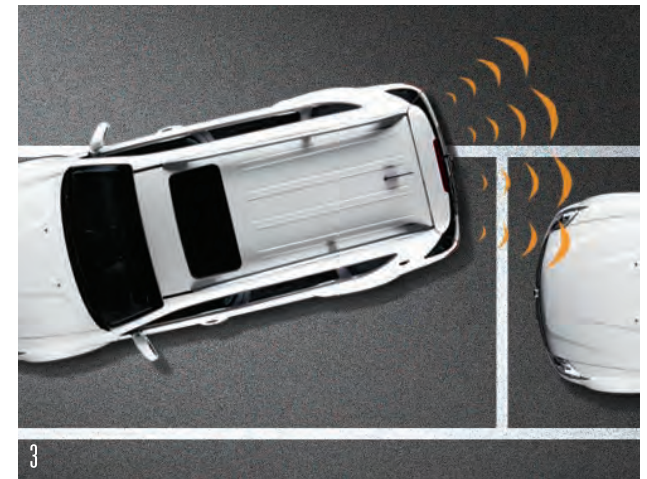


Torque On Demand (RX5 model)

The Torque On Demand system is designed for all-around driving comfort and ease under diverse road conditions. The system is equipped with sensors that monitor driving conditions and will automatically distribute additional torque to the front wheels when the wheels start to slip, thereby enhancing vehicular stability. However for serious off-roading you can manually switch to 4L (low range).



ENJOY IT LIKE THE PERKS OF SUCCESS.



LITTLE FEATURES THAT MAKE A BIG DIFFERENCE.

The Rexton treats you to a sumptuous spread of comfort that would make any high-end saloon envious. It offers cruise control at the press of a lever located cleverly on the steering wheel. An electric sunroof so you can bask in the glory and a sunblind should the sun glare down. The not-so-little things that tell you a lot about the Rexton. It's crafted with the greatest care for people who truly appreciate excellence and simply love to drive.

- 1: Cruise control
- 2: Speed sensitive power steering with tilt adjustment and audio controls
- 3: Rear parking sensors
- 4: Glovebox illumination
- 5: Cup holders front
- 6: 6a. 6b. 2nd and 3rd row folding
- 7: Keyless entry

- 8: Electrically foldable, adjustable and heated ORVMs
- 9: Stainless steel door scuffs
- 10: Electric sunroof with sunblind
- 11: Cigarette lighter and 3-12V power outlets
- 12: Fog lamps with integrated turn indicators
- 13: Auto dimming IRVM & Sunglass holder



PLAY IT LIKE YOU NORMALLY DON'T: SAFE.



You could ad
than an autom
engine to ent
All to bring to

KOREA TO IN
Founded in
company's u
success in ov
vehicles to be



STAY IN CONTROL. IN ALL CIRCUMSTANCES.

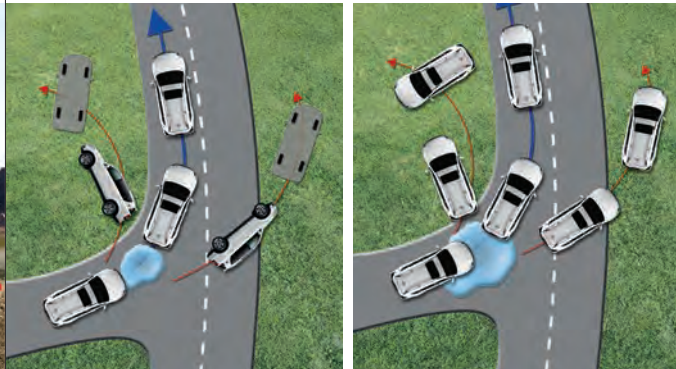
You take chances when it comes to business but not when you take your seat in the Rexton. It comes equipped with the many advanced active and passive safety systems that you need. The Electronic Stability Program monitors the status of the SUV at all times. And should the need arise, frontal and side airbags will instantly inflate to ensure your safety.

HDC - Hill Descent Control



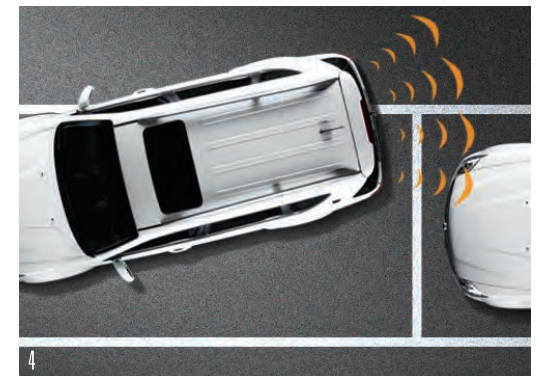
When the downward gradient reaches 10% or more, the HDC assumes braking duties and maintains slow and steady vehicular movement so the driver can focus solely on steering.

ESP - Electronic Stability Program



The ESP monitors road conditions and vehicle status constantly, adjusting engine output and braking whenever the driver is about to lose control. The ESP integrates the anti-lock brake system, active rollover protection and anti-slip regulation to improve the Rexton's intervention capabilities.

1. Airbags on the front and side
2. Door impact bar
3. Speed sensing door lock
4. Parking assist



TECHNICAL SPECIFICATIONS

VARIANT	RX5, RX6 MT (TOD) RX7 AT (AWD)
DIMENSION	
Length (mm)	4,755
Width (mm)	1,900
Height (mm)	1,785 (1840 with roof rails)
Wheelbase (mm)	2,835
Turning radius (m)	5.7
Tyre size	P 235/75 R16
FUEL TANK CAPACITY (l)	78
POWERTRAIN	
Engine, Gearbox	RX270 XDi RX270 XVT
Fuel type	Diesel
Number of cylinders	5
Displacement (cc)	2696

Max. Power output (Bhp@rpm)	162@4000 184@4000
Max.Torque output (Nm@rpm)	340@1800-3250 402@1600-3000
Transmission (no. of gears)	5
Transmission (MT/AT)	MT E-tronic AT
Drivetrain	Torque On Demand All Wheel Drive
Emission	BS IV
GROSS VEHICLE WEIGHT	
Kerb weight (kg)	2060
BRAKES	
Front	Ventilated Disc
Rear	Disc
PERFORMANCE DATA	
Max. Speed (Kmph)	180 194

COLOURS



SATIN WHITE

MOONDUST SILVER



VOLCANO BLACK

OPULENT PURPLE

DESIGN

- Chrome grille
- Eagle eye shaped projector headlamps with L-shaped parking lights and Rexton emblem
- Stylish bumper integrated fog lamps and turn signals
- ORVMs with integrated LED turn indicators
- LED rear tail lamps with L-shaped parking light
- Chrome side mouldings
- Stylish 10-spoke 16" alloy wheels
- Stainless steel side step with rubber inserts
- Rexton branding on scuff plates
- Premium silver coloured roof rails
- Sporty antenna
- Sporty rear spoiler
- W 'Work of Art' emblem

LUXURY & COMFORT

- Dual tone beige & black interiors
- Metalgrain accents
- Premium fabric upholstery
- Premium leather upholstery
- Leather-wrapped steering wheel
- Leather-wrapped steering wheel with additional metalgrain accents
- Gear knob leather-wrapped
- Gear knob with chrome and metalgrain accents
- 8-Way electrically adjustable driver seat
- 8-Way manually adjustable driver seat

- Driver seat with adjustable lumbar support
- Automatic easy access function for driver seat
- ORVMs with electric adjustment + folding and heating
- Touch screen Infotainment system with - MP3, DVD, USB port & Aux-in and 6 speakers
- Steering mounted audio controls
- Tilt adjustable steering wheel
- Day and Night IRVM Manual
- Day and Night IRVM Auto
- Power windows with driver side auto up-down
- Keyless Entry
- 3 - 12V power outlets (dashboard mounted, below front passenger seat & boot)
- Cigarette lighter
- Removable ashtray
- Front and 2nd row cup holders
- 2nd row AC vents
- 3rd row AC vents with blower controls
- 60:40 split foldable 2nd row seats
- Foldable 3rd row seats
- Reading lamps in all three rows
- Key hole illumination
- Coat hook
- Sunglass holder
- Driver and co-driver front sunvisors with vanity mirrors and lights
- Front glove box illumination
- Premium floor mats

TECHNOLOGY

- Video function (when stationary) (DVD/DivX/MPEG/MPEG2)
- Navigation system with preloaded maps
- E-tronic gearbox with sporty manual mode and winter switch
- E-tronic shift buttons on steering wheel and shift position indicator
- Power assisted steering
- Speed sensitive power steering
- Memory function with 3 presets for driver seat and ORVMs
- Electric sunroof with tilt/open function and sunblind
- Fully automatic climate control system
- Audible rear parking sensors
- Automatic headlamps
- Rain sensing wipers
- Cruise control
- Ultra-rigid steel frame with triple layer construction

PERFORMANCE

- Double wishbone front suspension with anti-roll bar
- 5-link Coil Spring rear suspension with anti-roll bar
- All Wheel Drive system (AWD)
- Intelligent 4x4 Torque-On-Demand system (TOD) with low ratio

SAFETY

- ABS
- Electronic Stability Program with off switch
- Anti-Slip Regulation
- Active Rollover Protection
- Hill Descent Control with on/off switch
- Dual front airbags
- Side Airbags
- Seat belt pre-tensioner & load limiter
- 3-Point ELR seat belt for driver and co-driver
- 3-Point ELR seat belt for 2nd row seat
- Seat belt warning
- Headlamps Levelling System
- Immobilizer
- Power door lock
- Door ajar warning
- Strengthened body structure with reinforced steel panels
- Side impact beams
- Front and rear crumple zones
- Rear windscreen defogger
- Rear windscreen wash and wipe
- Tubeless tyres
- Tinted glass

Available only in RX7 AT variant

Available only in RX6 MT variant

Available only in RX5 MT variant

For more information, call us at 1800-266-7000.

Mahindra & Mahindra Ltd. Marketing Office, Mahindra Towers, 3rd Floor, Akurdi Road, Kandivali (E), Mumbai 400 101.

All features and colours mentioned are not available on all models • Colours and accessories shown in some images may not be available as standard specification in Indian market • Performance figures may differ in conditions other than test conditions • Vehicle body colour may differ from the printed photographs • In view of our policy of continuously improving our products, we reserve the right to alter specifications or designs without prior notice and without liability • 3 years or 1 lakh kms whichever is earlier and conditions apply • Please check model details with your nearest dealer

www.ssangyongrexton.in



facebook.com/ssangyongrextonindia



twitter.com/rextonindia



youtube.com/ssangyongrextonindia

